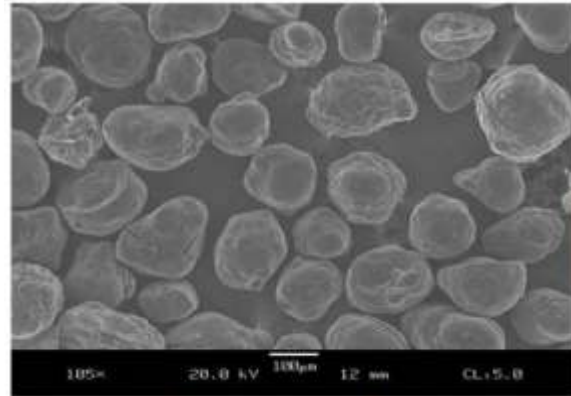


## PRODUCT DESCRIPTION

251LC is a calcined petroleum coke backfill with high conductivity, designed to attain the required resistivity specifications. Due to the rounded edges of its particles, 251LC is the best choice material as an additive for the drilling heavy mud or as a backfill application for deep wells. 251LC coke is combined with graphite traces to enhance the electrical conductivity. 251LC comes in 55 lb packages.



## ADVANTAGES

- Being combined with graphite, the electrical conductivity of the product is increased.
- The small size of its particles, grants 251LC a higher density.
- The rounded shape of its particles makes 251LC suitable for mud applications.
- High density guarantees that the backfill groups well, either using pump application or in dry applications.
- 251LC flows easily around the anodes, with no empty spaces.
- It is an excellent choice, whether it is for deep wells or for conventional anode beds.

## PROPERTIES

251LC Asbury has the following properties:

251 LC PROPERTIES	
Carbon content (%)	99.8 %
Resistivity (Ohm cm)	0.10
Particles size (mesh)	40 x 80
Apparent density (lb/ft <sup>3</sup> )	64
Apparent density (kg/m <sup>3</sup> )	1,025.18

## INSTALLATION

Since 251LC has additives, when it is mixed with water it takes the appearance of heavy mud (for the mixture, it is advised to use 7 gallons of water for 100 pounds of 251LC). After installing the product, you must wait 24 hours to allow the stabilization of the backfill before energizing.

To determine the required 251LC volume, according to the size of the cylindrical hole, we offer the following table as a reference:

HOLE SIZE	REQUIRED POUNDS / LINEAL FOOT	REQUIRED kg/ LINEAL METER
4"	5.6	8.3
6"	12.5	18.6
8"	22.3	33.2
10"	34.9	51.9

#### WARRANTY AND LIMITATION OF LIABILITY

TECNOLOGIA TOTAL will not be in any case responsible for damages of any nature that could be derived from an inadequate use of the product. Before using the product, the user must determine if the product is suitable for its intended use, taking all risks and liability that could be derived from its use.

If it's proved that a product is faulty due to manufacturing or its material at the time of sale, or that it does not fulfill during its warranty period the indicated properties in this technical sheet, the only responsibility of TECNOLOGIA TOTAL will consist of replacing the buyer with the quantity of product that is found to be defective. TECNOLOGIA TOTAL does not take any responsibility for any additional cost such as manufacturing cost, withdrawal or re-application of the products. If TECNOLOGIA TOTAL offers a warranty to their clients, express or implicit, or a compensation that differs from the established in this section, this stipulation can not be altered unless a signed agreement by the parties.

EXCLUSIVE DISTRIBUTOR FOR PERU: **TECNOLOGIA TOTAL SAC.**

